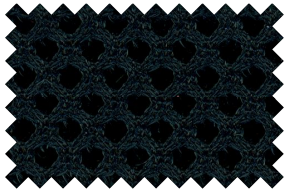
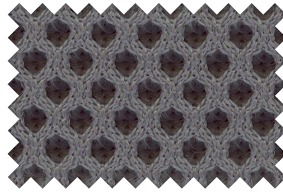


RUNNER / NETZ / MESH

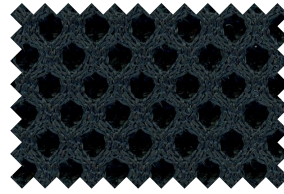
STOFFGRUPPE NETZ / MESH FABRIC GROUP



852 schwarz / black



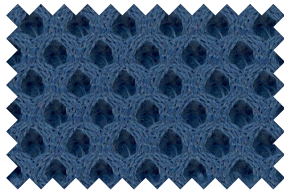
854 grau / grey



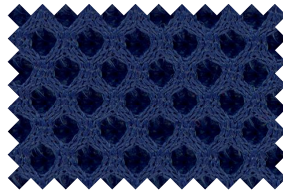
864 dunkelgrau / dark grey



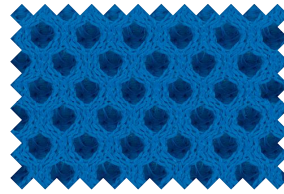
853 weiß / white



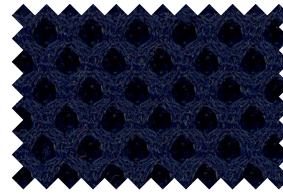
858 capriblau / capriblue



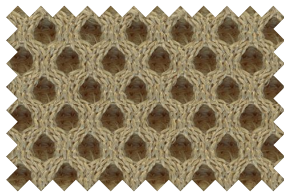
862 royalblau / royalblue



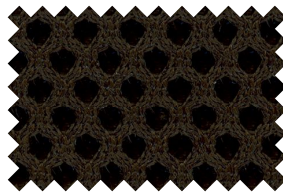
856 blau / blue



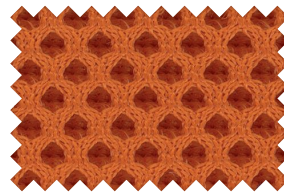
861 dunkelblau / dark blue



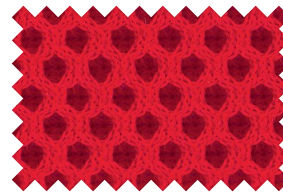
866 sand / sand



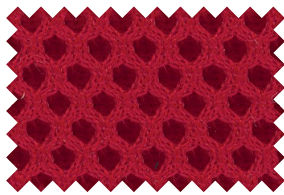
865 braun / brown



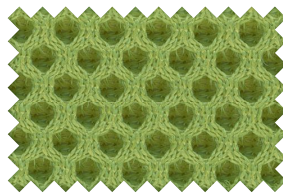
863 orange / orange



855 rot / red



859 dunkelrot / dark red



857 hellgrün / light green

Gewicht in Gramm / laufender Meter <i>Weight per running meter</i>	510 g / lm
Breite / Width	160 cm
Lichtechtheit / Colour fastness	5 - 7
Reibechtheit Trocken / Nass <i>Colour fastness to rubbing dry / wet</i>	4 - 5
Scheuerfestigkeit in Scheuertouren (nach Martindale) <i>Abrasion resistance (rubs Martindale)</i>	70.000

Feuersicherung nach / Flammability

- EN 1021-1 & 2
- UNI 9175 Class 1 | EMME



Wissenswertes über Runner:

- 100 % Polyester
- Oeko-Tex 100 zertifiziert

Useful information about Runner:

- 100 % Polyester
- Oeko-Tex 100 certified

